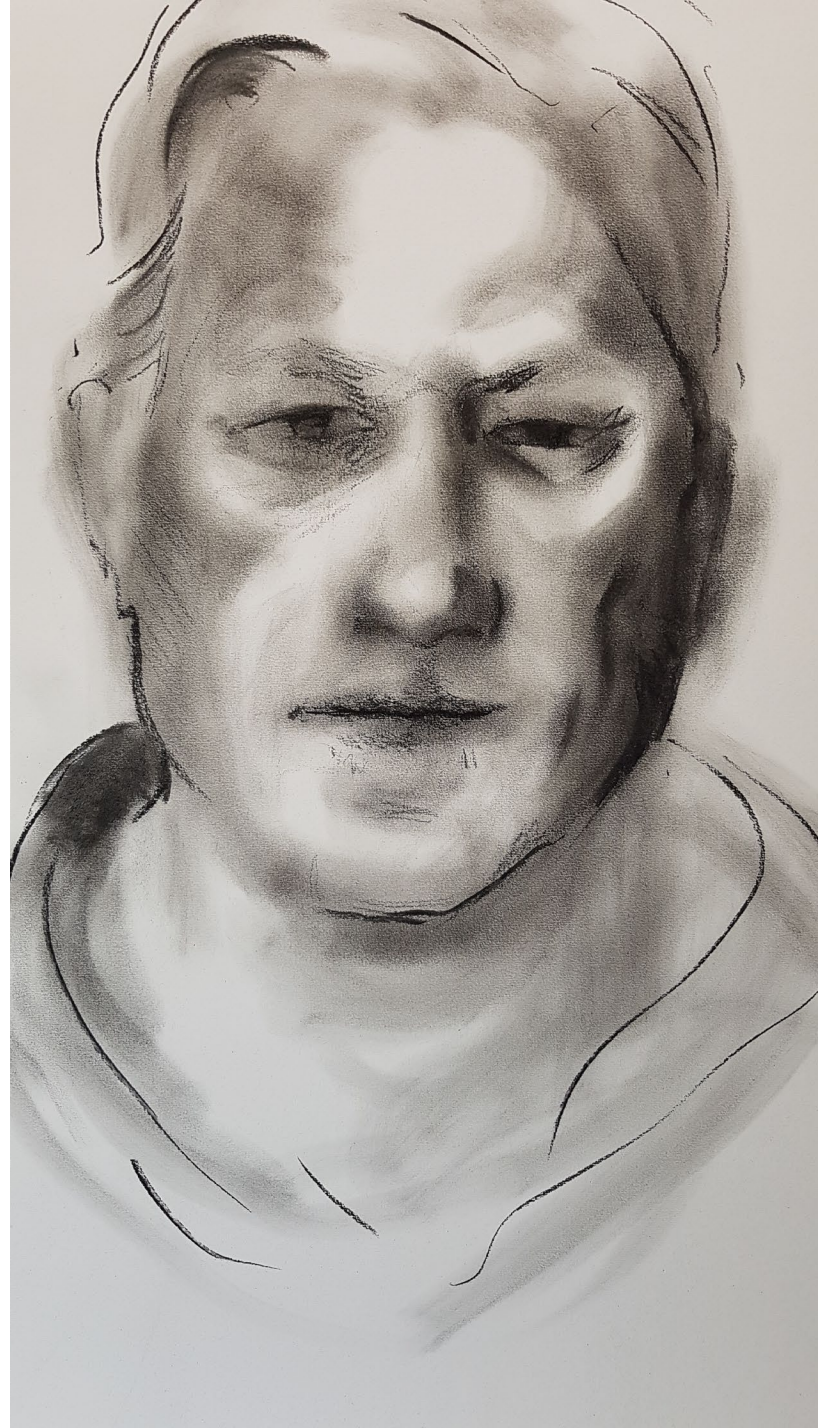
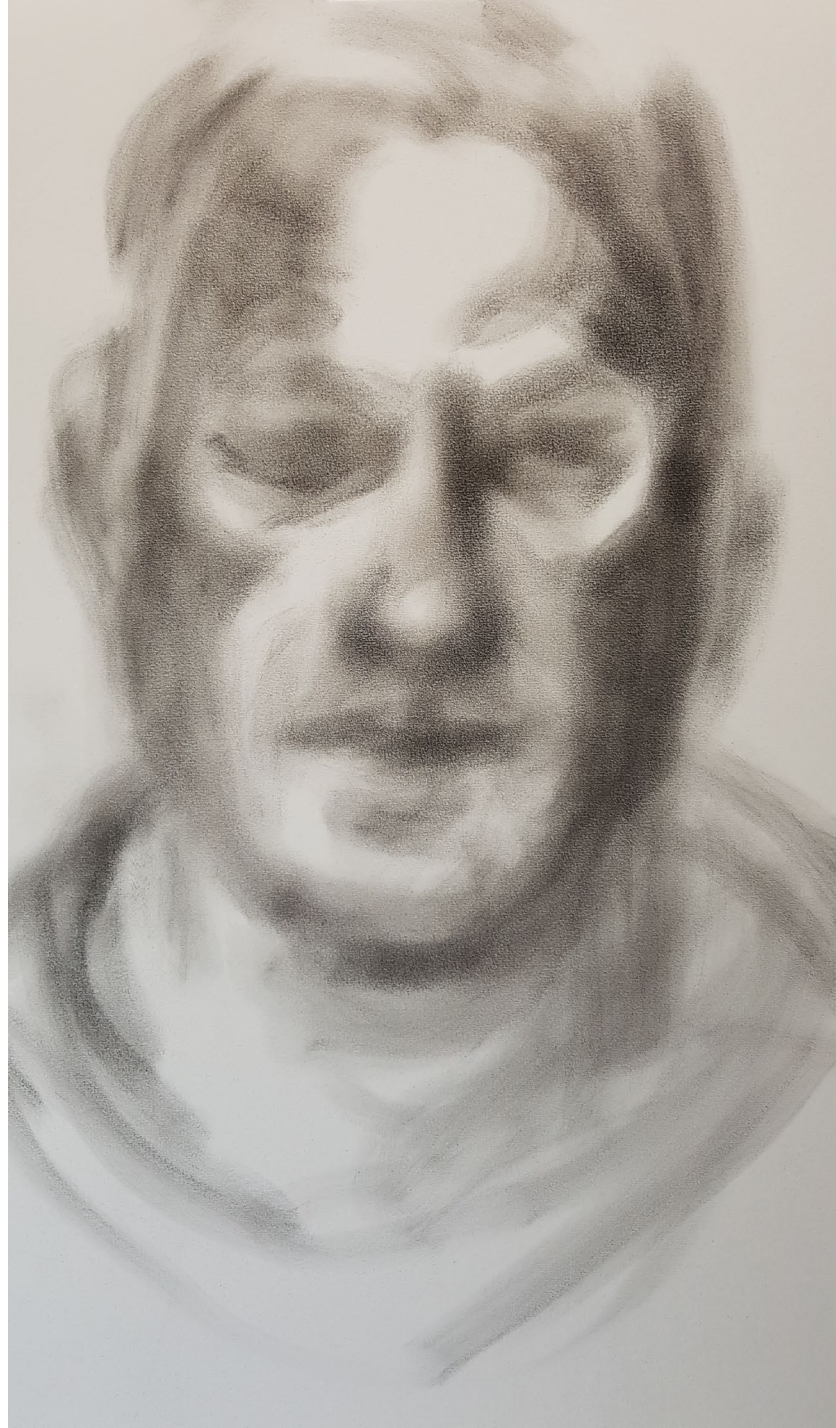




Looking to pounce: Portrait Drawing with Elisa Crossing

All images in this presentation are the copyright of the artist unless otherwise stated.

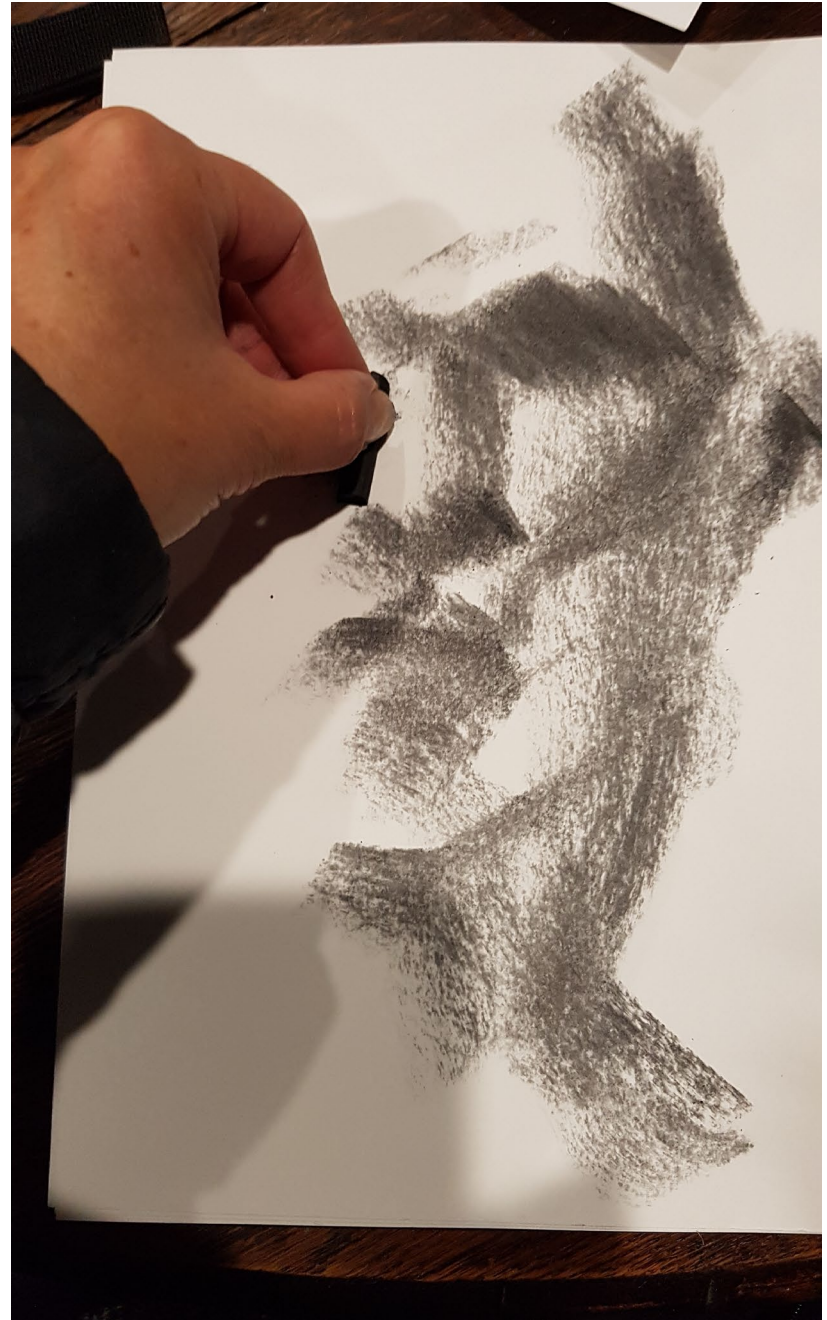
Copyright Elisa Crossing 2021



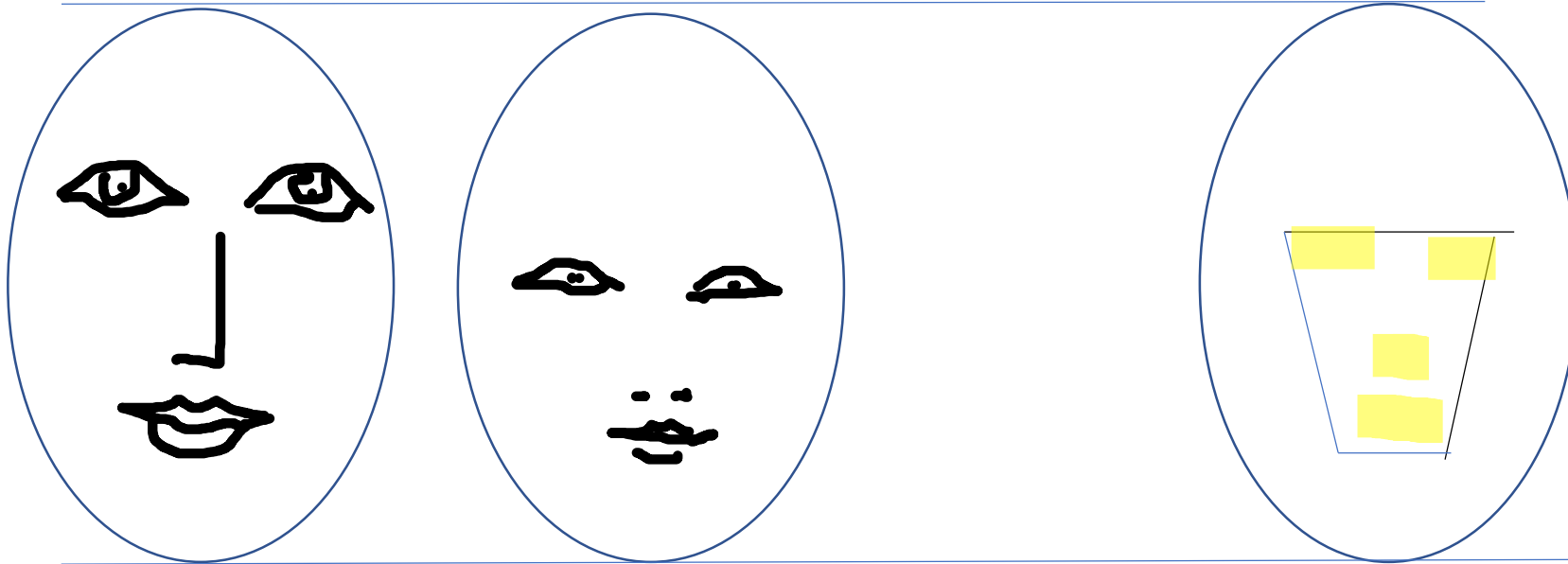
Working with a pounce



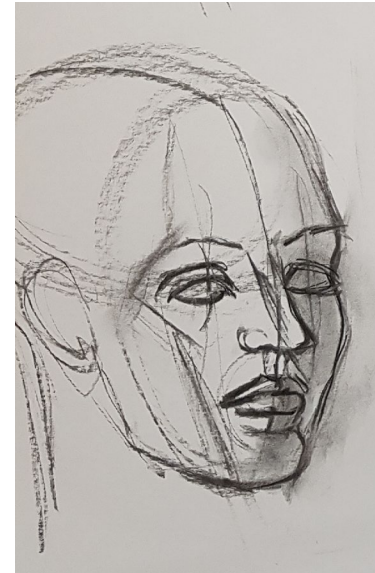
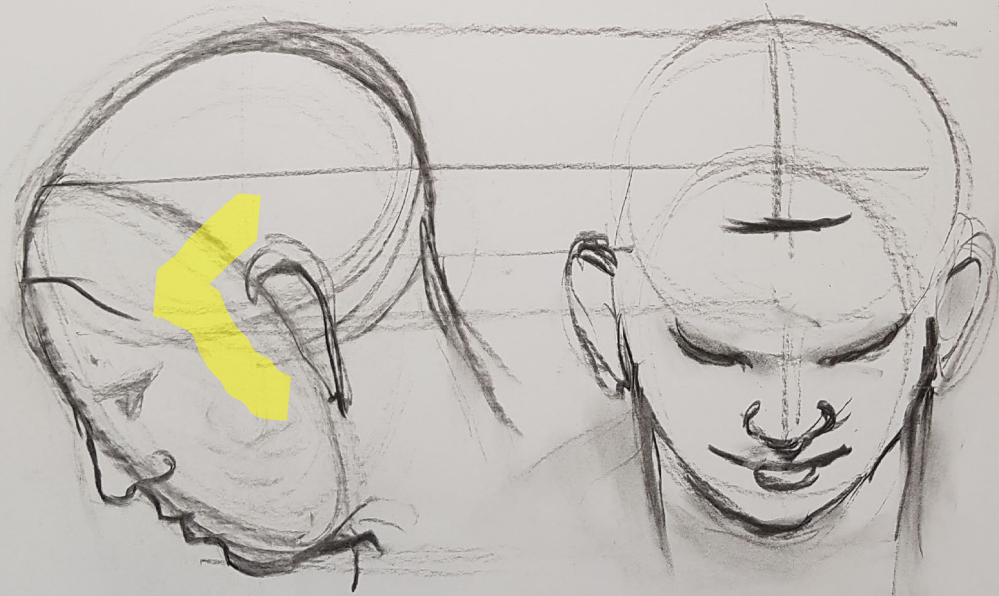
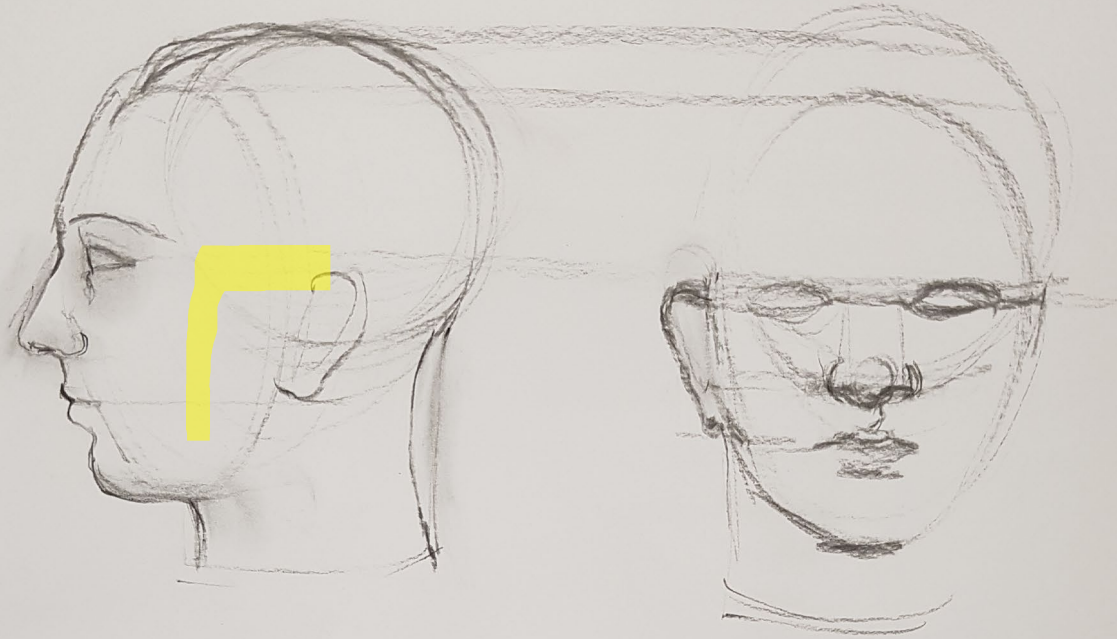
Alternatively with charcoal on the side



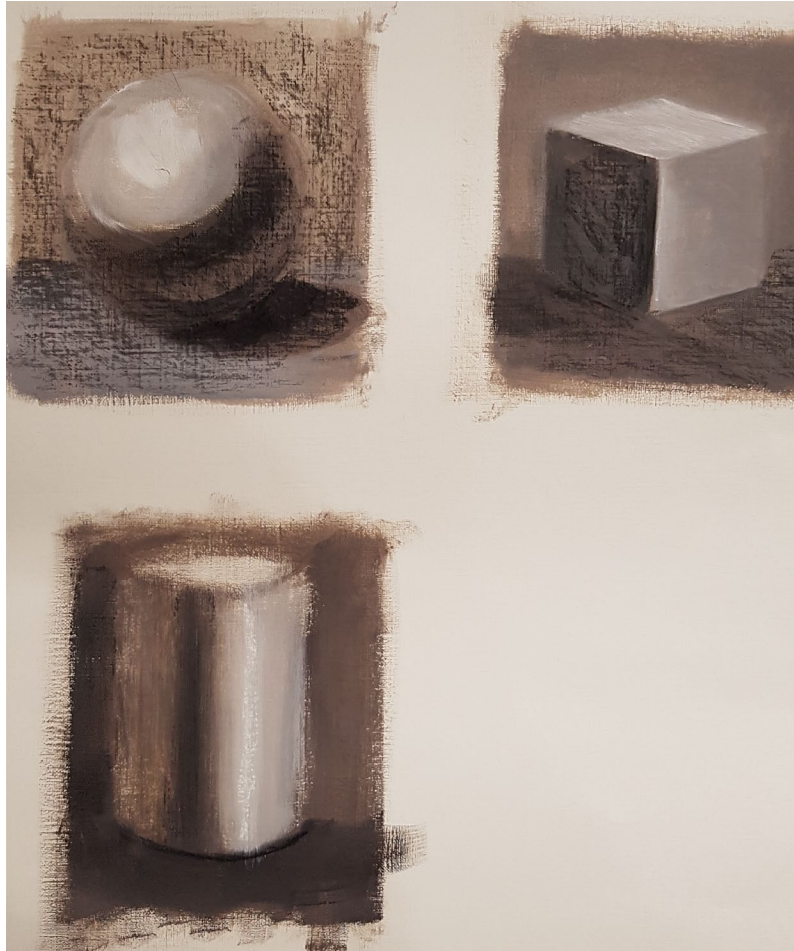
When you draw a head as an outline and avoid putting in the features until the end of the drawing it is easy to over-estimate the size of the eyes nose and mouth and ignore the flesh around them . The larger features can have the illusion of making the head seem too large for the body when in fact it is not. Note the image on the left – there is not much space for a brain. The third oval shows in highlight the small region that the features occupy.



Internal geometry of the head as two intersecting ovals

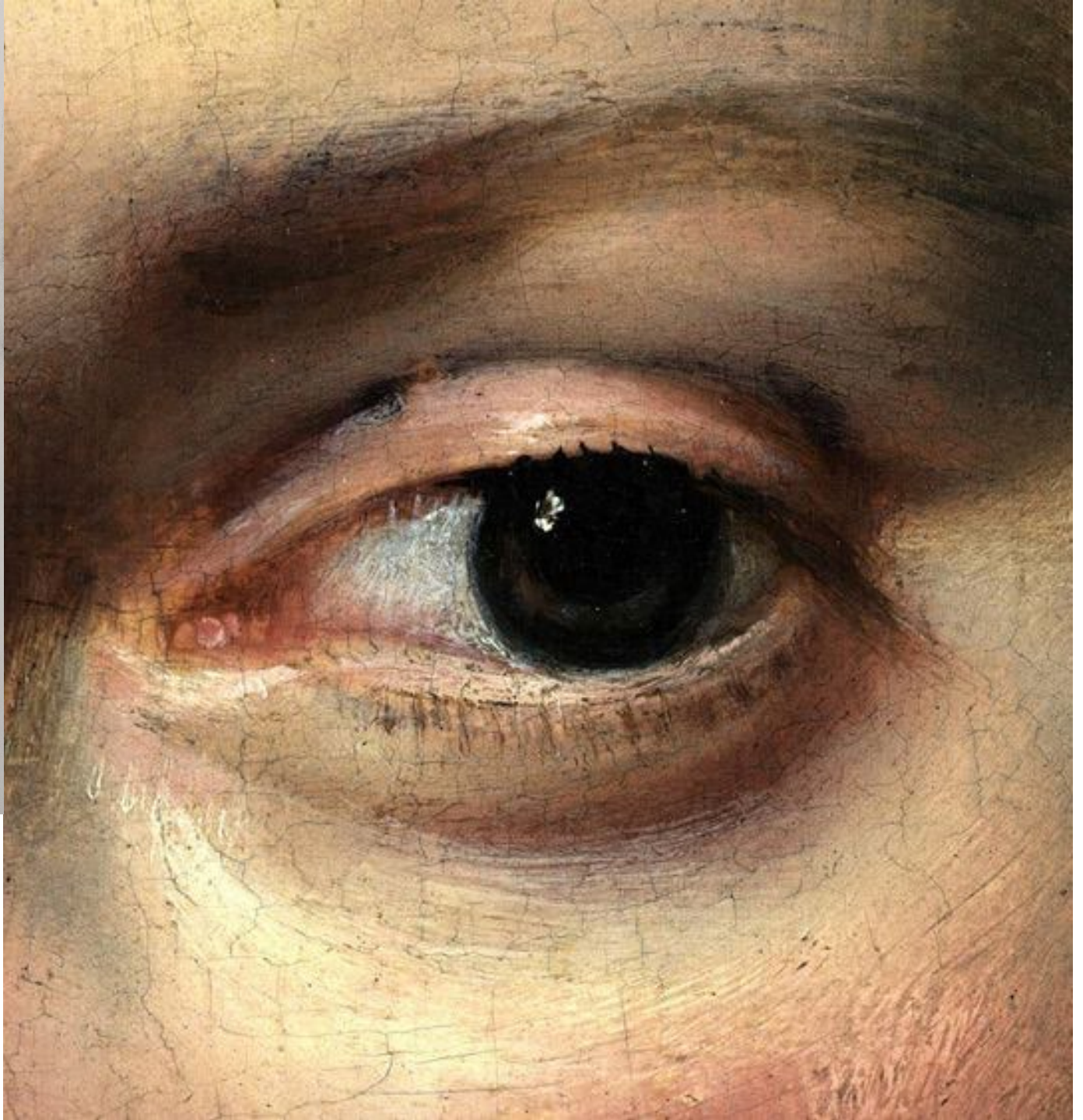
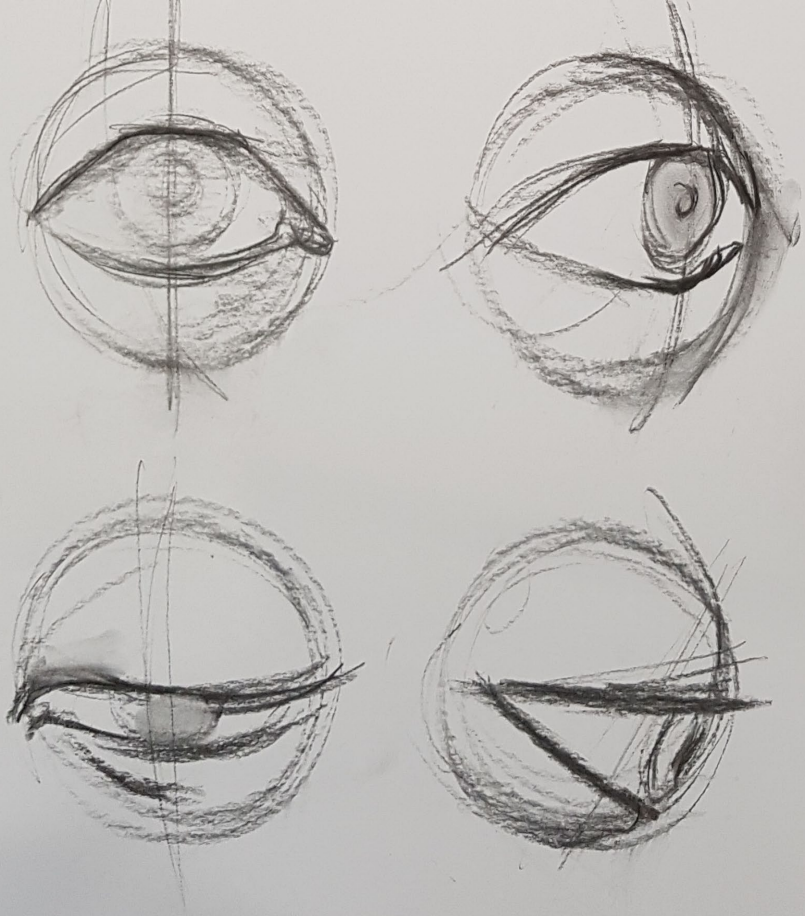


Looking for tonal values



Madame Seurat, the Artist's Mother (Madame Seurat, mère); Georges Seurat (French, 1859 - 1891); about 1882–1883; Conté crayon on Michallet paper; 30.5 × 23.3 cm (12 × 9 3/16 in.); 2002.51; The J. Paul Getty Museum, Los Angeles.





Peter Paul Rubens: Detail from Portrait of a young lady with rosary, c. 1609-1610. Oil on board, 107 x 76.7 cm. Thyssen-Bornemisza Museum, Madrid. INV. 352 (1979.64) ©Museo Nacional Thyssen-Bornemisza, Madrid

